

BALDOR® • RELIANCE 

Product Information Packet

D1815R

1.50HP,1750RPM,DC,189ATY,TENV,

Part Detail							
Revision:	-	Status:	PRD/A	Change #:		Proprietary:	No
Type:	DC	Prod. Type:		Elec. Spec:	G4604A	CD Diagram:	406770-007
Enclosure:	TENV	Mfg Plant:		Mech. Spec:		Layout:	609980-503
Frame:	DC018	Mounting:	F3	Poles:	00	Created Date:	12-27-2019
Base:		Rotation:		Insulation:	F	Eff. Date:	01-02-2020
Field Type:		Literature:		Elec. Diagram:		Replaced By:	

Specs			
Enclosure:	TENV		
Frame:	DC0189ATY		
Frame Material:	Exposed Laminations		
Agency Approvals:	CCSA US		
Base Indicator:	Rigid		
Bearing Grease Type:	Polyrex EM (-20F +300F)		
Drip Cover:	No Drip Cover		
Duty Rating:	CONT		
Feedback Device:	NO FEEDBACK		
Field Winding Type:	STR. SHUNT		
Frame Prefix:	DC		
Heater Indicator:	No Heater		
Insulation Class:	F		
Lifting Lugs:	Standard Lifting Lugs		
Mounting Arrangement:	F3		
Shaft Extension Location:	Pulley End		

Shaft Ground Indicator:	No Shaft Grounding		
Shaft Slinger Indicator:	No Slinger		
Motor Standards:	NEMA		
Thermal Device - Bearing:	None		

Nameplate 000613006HP	
CAT.NO. D1815R	SPEC NO. T18S1119
FR DC0189ATY	HP 1.5
ENCL. TENV	DUTY CONT
ENCL MOD	RPM 1750
MAX SAFE SPEED 04500	S.F. 1.0
	VOLTS 180
	AMPS 7.20
	INSUL F
	AMB. 40
	SER.NO.
	POWER CODE 2/2-230-60-0
	D.E. BRG. 30BC02JPP30A
	O.D.E. BRG. 30BC02JPG30A
	MIN. AMB. 0
	TYPE TR
	BRUSH: 419904050A
	SPLASHPROOF

FIELD DATA

WINDING STR. SHUNT

VOLTS 100/200

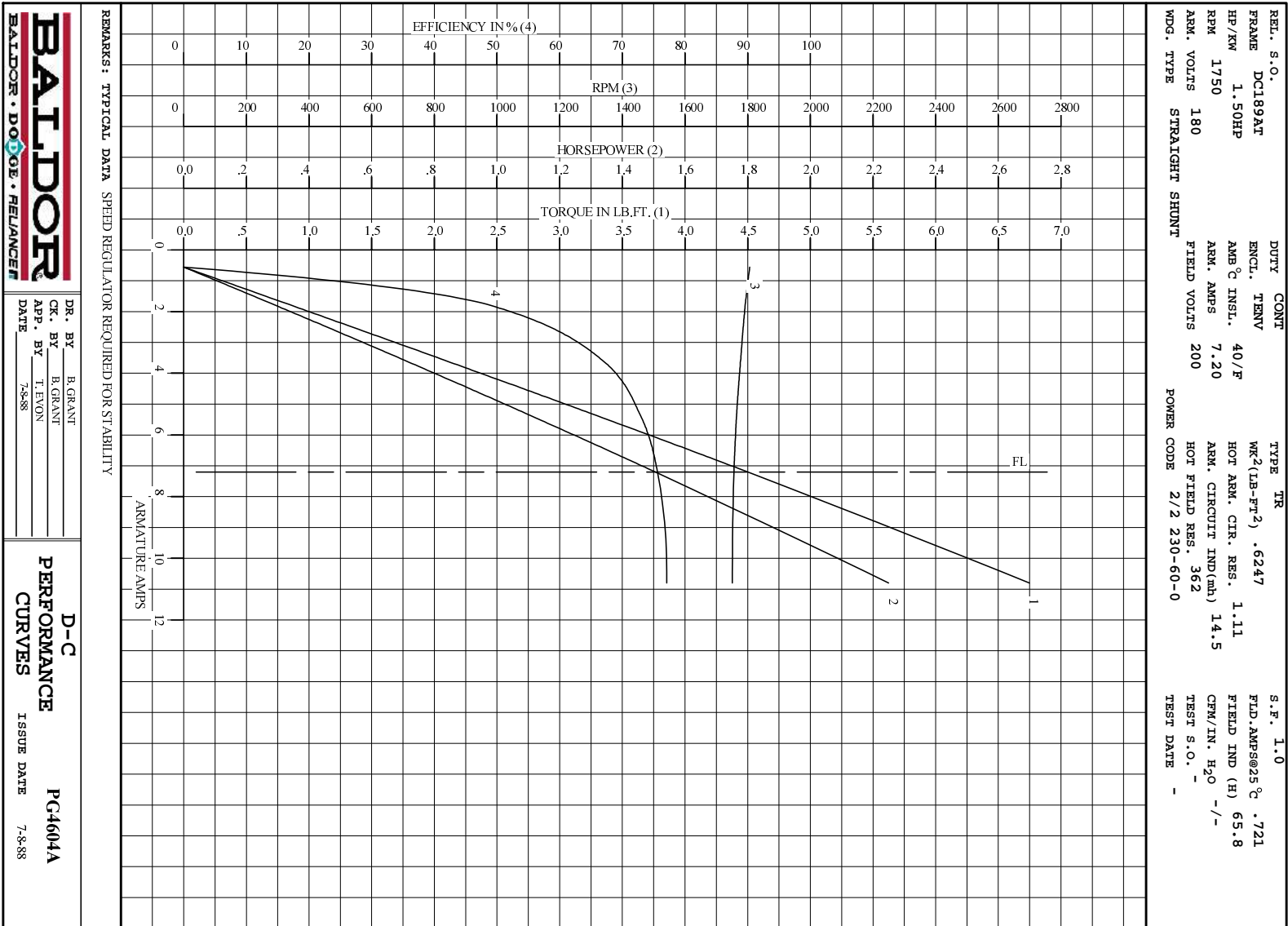
MAX AMPS @ 25 C 1.44/.72

HOT AMPS 1.10/.55

Parts List		
Part Number	Description	Quantity
SA377459	SA T18S1119	1.000 EA
AA018264	AA T18S1119	1.000 EA
000692000FP	NP, WARNING LIFT INSTRUCTIONS	1.000 EA
000692000FS	WARNING LABEL	1.000 EA
418057747A	METAL FASTENER	8.000 EA
000613006HP	NAMEPLATE - RPM III D-C MOTOR W/CSA LOGO	1.000 EA
422908009B	SLVNG EXTRA SLVG LENGT	28.000 EA
609844002A	BALANCE RING	1.000 EA
036000012HB	HHCS M6X12MM LONG PLATED	1.000 EA
036010010GB	M5-.8 X 10 HXWHD SCREW	2.000 EA
610470003R	BRASY METRIC	1.000 EA
419904050A	BRUSH N	2.000 EA
801758061A	BRKT,ODE,DC180	1.000 EA
801759066AA	BRKT,DE,DC180	1.000 EA
004824015A	GREASE POLYREX EM	0.100 LB
036000050HB	MHHCS M6X50MM PLATED	2.000 EA
400638001C	WSHR	1.000 EA
036500009AB	METRIC NUTM8-1.25PLTD-360	4.000 EA
036500009AB	METRIC NUTM8-1.25PLTD-360	4.000 EA
609830005J	TBOLT METRC RP 609830-	4.000 EA
415000103A	T/LUG #14AWG-#4AWG W/HOLE FOR .250 BOLT	1.000 EA
033520003JE	SHWHS	1.000 EA
417733003A	GASKT	1.000 EA
418018074A	GROUND LABEL G100 METRIC 160 D.C.	1.000 EA

Parts List (continued)		
Part Number	Description	Quantity
036620008AB	M6 METRIC EXT LOCKWASHER	1.000 EA
032018004CK	HHCS 3/8-16X1/2L PLATED	4.000 EA
422919199	CVRKT FE	1.000 EA
422919200	HHCVR KIT,DC180,ODE,SOLID	1.000 EA
422919200	HHCVR KIT,DC180,ODE,SOLID	1.000 EA
422919200	HHCVR KIT,DC180,ODE,SOLID	1.000 EA
706310300A	COND BOX	1.000 EA
06CB3500	BALDOR CONDUIT BOX LID	1.000 EA
06GS1001	BALDOR CONDUIT BOX GASKET	1.000 EA
033518006LB	HWHMS, .75IN 1/4-20	2.000 EA
036000010HB	MHHCS M6-1.0X10L PLATED	4.000 EA
406770007	C/D TAG	1.000 EA
706305020A	GUARD, SHAFT	1.000 EA
034180010CA	KEY 3/16X3X16X1-1/4 L	1.000 EA
000640000P	TAG WINDING THERMOST	1.000 EA
000692000NF	NP 2POLE METRIC LABEL	1.000 EA
004824007K	SPECIAL PAINT	0.100 EA

REL S.O.	FRAME	RATING	RPM	ARM. VOLTS	ARM. AMPS
	DC189AT	1.50HP	1750	180	7.20
WINDING TYPE					
	S.F.	ENCL.	AMB °C/INSUL	DUTY	FIELD VOLTS
STRAIGHT SHUNT	1.0	TENV	40/F	CONT	200
POWER CODE					
	TYPE	WK ² (LB-FT ²)	HOT ARM.CIR.RES.	FLD. AMPS@25 °C	HOT FIELD RES
2/2 230-60-0	TR	.6247	1.11	.721	362
ARM. CIR. IND. (mh)					
	FIELD IND. (H)	COOLING AIR(CFM/IN H 20)	TURNS PER COIL SHUNT/SERIES	TEST DATE	
14.5	65.8	-/-	2500/.00000		
LOAD PERFORMANCE					
LOAD	AMPERES	TORQUE IN LB.-FT.	OUTPUT IN HP	RPM	% EFFICIENCY
NO LOAD	.56	0	0	1807	0
1/4	1.8	.861	.294	1792	49.0
2/4	3.6	2.10	.710	1777	66.9
3/4	5.4	3.31	1.11	1764	73.0
4/4	7.2	4.50	1.50	1756	75.6
O.L.	11	6.75	2.25	1751	77.1
RPM VS. FIELD AMPS					
	FIELD AMPS	RPM N.L.	RPM F.L.	Eg N.L. @ BASE SPEED	Eg F.L. @ BASE SPEED
	.551	1806	1756	173	169
	.511	1842	1809	169	164
	.470	1885	1873	165	159
	.430	1949	1951	160	152
	.390	2039	2050	153	145
REMARKS: TYPICAL DATA					
MAXIMUM SAFE SPEED = 4500 RPM					
SPEED REGULATOR REQUIRED FOR STABILITY					
BALDOR		DR. BY B. GRANT		D-C MOTOR	
BALDOR • DOGGE • RELIANCE		CK. BY T. EVON		PERFORMANCE	
		APP. BY T. EVON		DATA	
		DATE 7-8-88		ISSUE DATE 7-8-88	

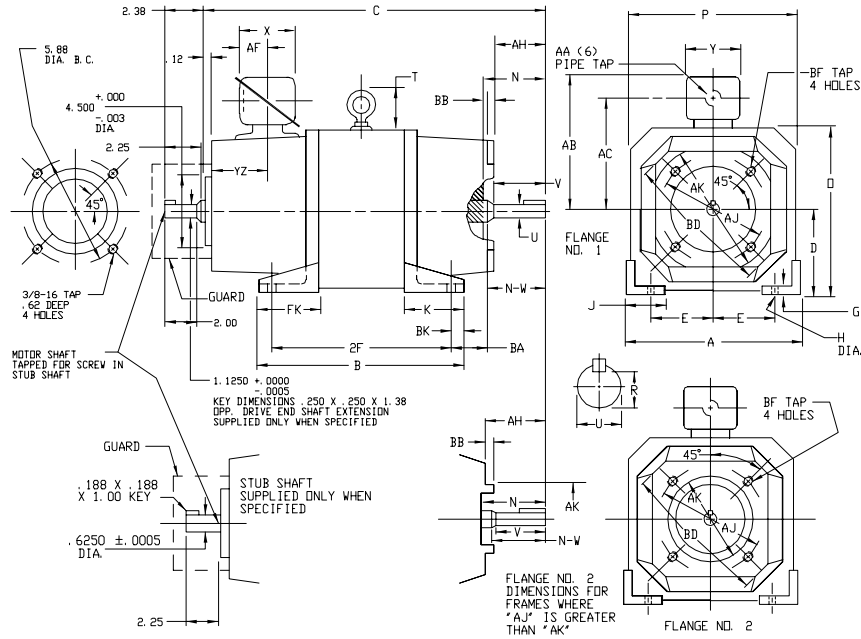


DR. BY B. GRANT
 CK. BY T. EVON
 DATE 7-8-88

D-C
PERFORMANCE
CURVES ISSUE DATE 7-8-88
PC4604A

609980-503

INDUSTRIAL DIRECT CURRENT MOTORS AND GENERATORS - RPM III
 ENCLOSURE: DRIP-PROOF FULLY-GUARDED MOUNTING: FOOT, "C" FACE COOLING: SELF-VENTILATED ACCESSORIES: PROVISIONS FOR TACHOMETER MOUNTING
 SPLASHPROOF, TOTALLY ENCLOSED METHOD OF DRIVE: COUPLED OR BELTED NON-VENTILATED ONLY WHEN SPECIFIED



DIMENSIONS ARE IN INCHES

FRAME	FLANGE	A	B	C (1)	E	G	H	J	K	FK	BK	D	P	T	BA	BB	BD	BF TAP	BF TAP DEPTH	AJ	AK (4)	A.C. SHAFT EXT. REF.
DC189ATY	ND 2	9.00	4.50	3.75	.31	.44	1.50	3.56	3.56	.50	8.88	8.75	1.88	2.75	.12	8.75	3/8-16	.62	5.88	4.500	140TC EXT.	
DC189ATCZ	ND 1	9.00	4.50	3.75	.31	.44	1.50	3.56	3.56	.50	8.88	8.75	1.88	2.75	.25	8.75	1/2-13	.88	7.25	8.500	180TC EXT.	
DC1810ATY	ND 2	9.00	4.50	3.75	.31	.44	1.50	3.56	3.56	.50	8.88	8.75	1.88	2.75	.12	8.75	3/8-16	.62	5.88	4.500	140TC EXT.	
DC1810ATCZ	ND 1	9.00	4.50	3.75	.31	.44	1.50	3.56	3.56	.50	8.88	8.75	1.88	2.75	.25	8.75	1/2-13	.88	7.25	8.500	180TC EXT.	
DC1811ATY	ND 2	9.00	4.50	3.75	.31	.44	1.50	3.56	3.56	.50	8.88	8.75	1.88	2.75	.12	8.75	3/8-16	.62	5.88	4.500	140TC EXT.	
DC1811ATCZ	ND 1	9.00	4.50	3.75	.31	.44	1.50	3.56	3.56	.50	8.88	8.75	1.88	2.75	.25	8.75	1/2-13	.88	7.25	8.500	180TC EXT.	

FRAME	FLANGE	C (5)	B	2F	DRIVE END SHAFT AND KEY										TERMINAL BOX DIMENSIONS				WT. LBS.	
					N	N-W	UK (2)	V	AH	R (3)	SG	LGTH	AA	AB	AC	AF	X	Y		YZ
DC189ATY	ND 2	18.81	11.62	10.00	2.44	2.25	.8750	2.00	2.12	.771	.188	1.38	3/4	6.88	5.56	1.69	3.38	3.88	3.25	130
DC189ATCZ	ND 1	19.44	11.62	10.00	3.06	2.88	1.1250	2.62	2.62	.986	.250	1.81	3/4	6.88	5.56	1.69	3.38	3.88	3.25	130
DC1810ATY	ND 2	19.56	12.38	11.00	2.44	2.25	.8750	2.00	2.12	.771	.188	1.38	3/4	6.88	5.56	1.69	3.38	3.88	3.25	155
DC1810ATCZ	ND 1	20.19	12.38	11.00	3.06	2.88	1.1250	2.62	2.62	.986	.250	1.81	3/4	6.88	5.56	1.69	3.38	3.88	3.25	155
DC1811ATY	ND 2	21.06	13.88	12.50	2.44	2.25	.8750	2.00	2.12	.771	.188	1.38	3/4	6.88	5.56	1.69	3.38	3.88	3.25	185
DC1811ATCZ	ND 1	21.69	13.88	12.50	3.06	2.88	1.1250	2.62	2.62	.986	.250	1.81	3/4	6.88	5.56	1.69	3.38	3.88	3.25	185

- (1) *D* DIMENSION WILL NOT BE EXCEEDED. SHIMS UP TO .03 INCHES IN THICKNESS ARE USUALLY REQUIRED FOR COUPLED OR GEARED MACHINES.
- (2) *U* VARIES +.0000, -.0005.
- (3) *FK* VARIES +.0000, -.0005. FACE RUNDOT AND ECCENTRICITY .004 MAX. T. I. R.
- (4) *AK* VARIES +.0000, -.0005.
- (5) WHEN THE MOTOR APPLICATION DOES NOT REQUIRE THE USE OF DPP. DRIVE END, ADD .25 TO *C* DIM. FOR BRACKET COVER.
- (6) TERMINAL BOX CAN BE ROTATED TO REPOSITION CONDUIT CONNECTION. IF MOUNTING CLEARANCE DETAILS ARE REQUIRED CONSULT FACTORY.

MOTOR WEIGHT MAY VARY 15% FOR NON-STANDARD RATINGS AND/OR ACCESSORIES.

CUSTOMER IS RESPONSIBLE FOR DETERMINING THAT BALDOR'S PRODUCT WILL PERFORM SUITABLY IN THE INTENDED APPLICATION.

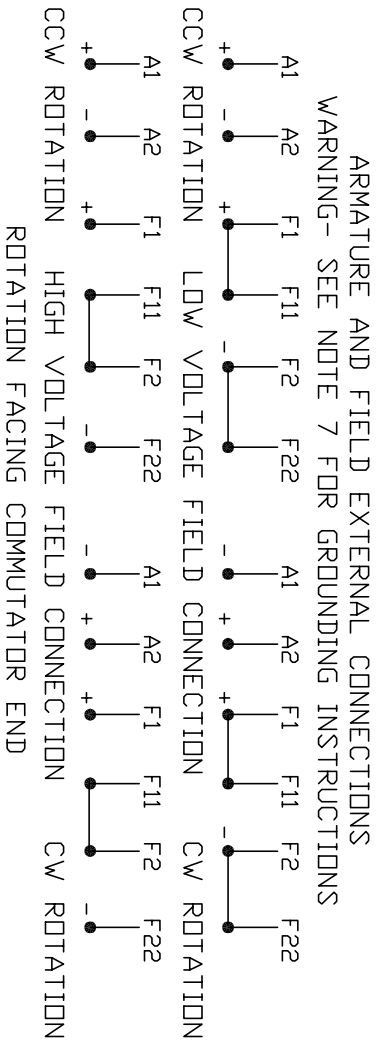
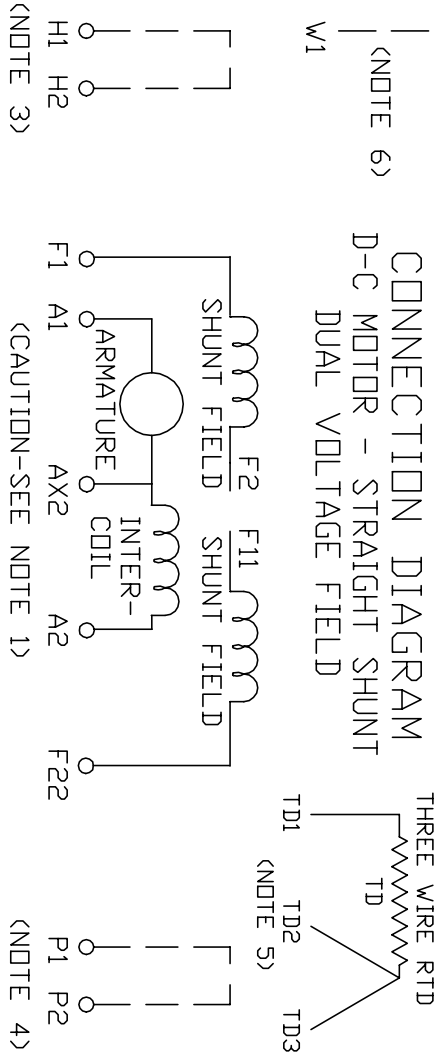
REV. DESC: RELOAD TO BUS	VERSION: 01	TDR: 00000956570
REV. LTR: A	REVISED: 01:19:35 12/11/2015	BY: USPABLO
FILE: \RSN\00031\917		
MTL: -		

BALDOR
 DIMENSION DRAWING, DC180ATY - DC180ATCZ, DPP, TENV, FOOT MTG.
 SH 1 of 1

609980-503

406770-007

406770-007



1. **CAUTION** — ARMATURE MAY HAVE MULTIPLE LEADS. CONNECT ALL LUGS WITH THE SAME MARKING TOGETHER.
2. OPTIONAL CONTROL SIGNAL LEAD IS MARKED AX2. ALWAYS TAKE INTERPOLE DROP BETWEEN A2 AND AX2. NOTE: NEMA DESIGNATION FOR AX2 IS LETTER C.
3. SPACE HEATERS, WHEN PROVIDED, WILL HAVE LEADS MARKED H1 AND H2, H3, H4, ETC.
4. THERMAL PROTECTOR, WHEN PROVIDED, WILL HAVE LEADS MARKED P1 AND P2, P3, P4, ETC.
5. WINDING RTD'S, WHEN PROVIDED, WILL HAVE LEADS MARKED TD1, TD2, & TD3.
6. BRUSH WEAR SENSOR, WHEN PROVIDED, WILL HAVE LEAD MARKED W1.
7. **WARNING** — MOTOR MUST BE GROUNDED TO PREVENT SERIOUS INJURIES TO PERSONNEL. GROUND THE MOTOR PER IEC, NATIONAL ELECTRICAL CODE AND ANY APPLICABLE LOCAL ELECTRICAL CODES. A TAPPED HOLE IS PROVIDED IN THE CONDUIT BOX, ON THE FOOT. FRAME BRACE OR OPPOSITE OPPOSITE DRIVE END BRACKET, ADJACENT TO THE TERMINAL BOX FOR FOR MOTOR GROUNDING. GROUND LEAD, WHEN PROVIDED, WILL BE GREEN.

CUSTOMER _____ RELIANCE
ORDER NO. _____ S.D. NO. _____

REV. DESC: UPDATE LOGO AND TITLEBLOCK: LOADED TO BUS

REV. LTR: -	VERSION: 00	TDR: 000000784225
FILE: \MGA\00001\391	REVISED: 02:50:46 02/01/2013	BY: MGHPC
MTL: -		

BALDOR

D-C MOTOR CONNECTION DIAGRAM, STR. SHUNT, DUAL VOLTAGE FIELD
SH 1 of 1

Marketing maintained PDF of MN604:

[MN604?ManNumber=MN604](#)